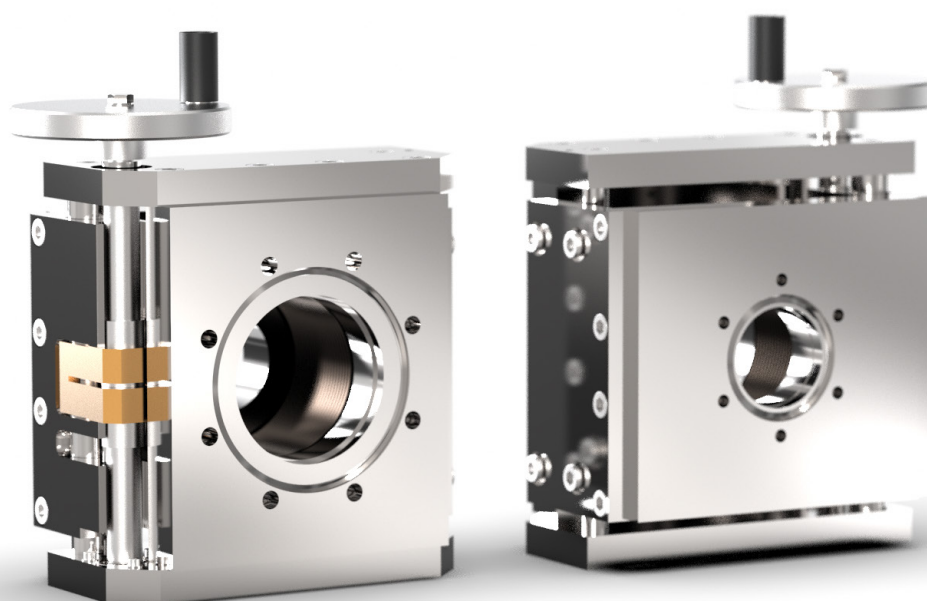




## Y-SHIFT Technical Data

LDM64-38 SPECIFICATION	VALUE
Travelling flange size	FC38 (2-3/4") metric tapped straddled
Fixed flange size	FC64 (4 1/2") metric tapped straddled
Stroke to hard stops	+/-7.5mm
Stroke to limit switches	+/-7mm
Clear bore	38 mm
Bellows bore	60 mm
Leadscrew pitch	1mm
Max probe diameter for full stroke	36mm
Max axial load on travelling flange	200 N
Maximum cantilevered moment	20 Nm
Calibrated scale resolution	N/A
Bakeout temperature	250 °C with motor removed
Stepper motor option	23 frame 8 wires 3A / phase
Stepper option - motor wiring	Pre-wired UTO to drawing 23HT18C330
Stepper motor option - switches	Bakeable limit and home switches with lemo socket wired to diagram WD-002
Stepper motor maximum linear speed	10 mm/second
Linear resolution per 1/2 step	0.0025 mm
Repeatability - no backlash compensation	0.1 mm (motorised)
Linear backlash mid stroke	0.2 mm



## Y-SHIFT Technical Data

LDM64-64 SPECIFICATION	VALUE
Travelling flange size	FC64 (4 1/2") metric tapped straddled
Fixed flange size	FC64 (4 1/2") metric tapped straddled
Stroke to hard stops	+/-7.5mm
Stroke to limit switches	+/-7mm
Clear bore	60 mm
Bellows bore	60 mm
Leadscrew pitch	1mm
Max probe diameter for full stroke	45mm
Max axial load on travelling flange	200 N
Maximum cantilevered moment	20 Nm
Calibrated scale resolution	N/A
Bakeout temperature	250 °C with motor removed
Stepper motor option	23 frame 8 wires 3A / phase
Stepper option - motor wiring	Pre-wired UTO to drawing 23HT18C330
Stepper motor option - switches	Bakeable limit and home switches with lemo socket wired to diagram WD-002
Stepper motor maximum linear speed	10 mm/second
Linear resolution per 1/2 step	0.0025 mm
Repeatability - no backlash compensation	0.1 mm (motorised)
Linear backlash mid stroke	0.2 mm



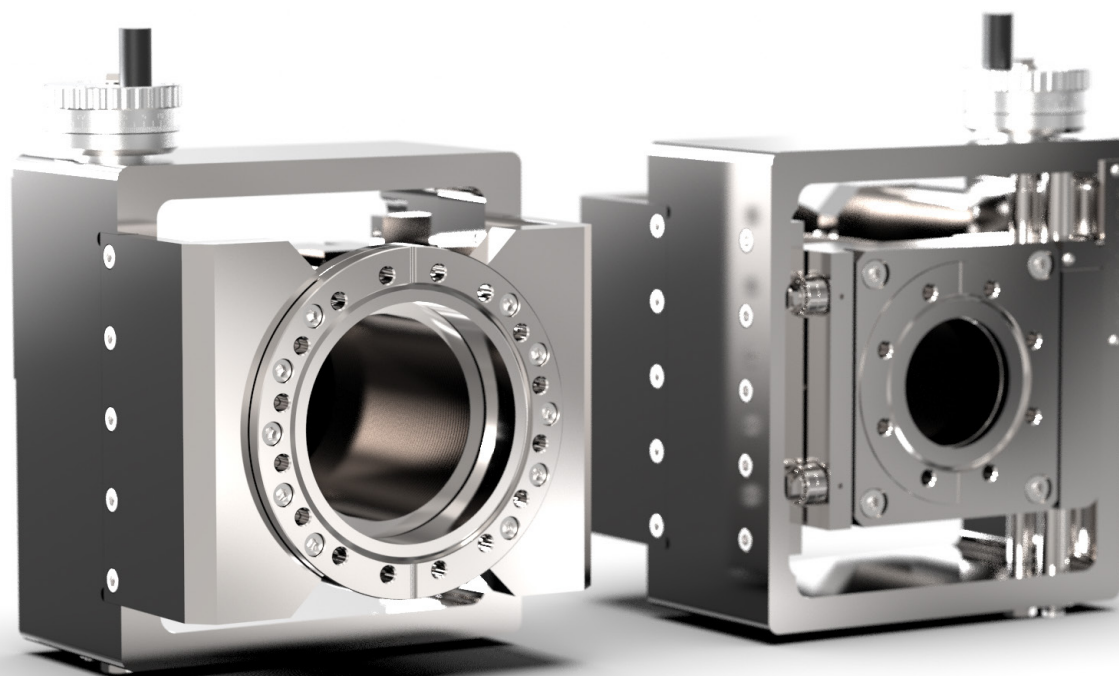
## Y-SHIFT Technical Data

LDM100-38 SPECIFICATION	VALUE
Travelling flange size	FC38 (2-3/4") metric tapped straddled
Fixed flange size	FC100 (6") metric tapped straddled
Stroke to hard stops	+/-31mm
Stroke to limit switches	+/-30.5mm
Clear bore	38 mm
Bellows bore	90 mm
Leadscrew pitch	2mm
Max probe diameter for full stroke	28mm
Max axial load on travelling flange	200 N
Maximum cantilevered moment	20 Nm
Calibrated scale resolution	N/A
Bakeout temperature	250 °C with motor removed
Stepper motor option	23 frame 8 wires 3A / phase
Stepper option - motor wiring	Pre-wired UTO to drawing 23HT18C330
Stepper motor option - switches	Bakeable limit and home switches with lemo socket wired to diagram WD-002
Stepper motor maximum linear speed	10 mm/second
Linear resolution per 1/2 step	0.005 mm
Repeatability - no backlash compensation	0.1 mm (motorised)
Linear backlash mid stroke	0.2 mm



## Y-SHIFT Technical Data

LDM100-64 SPECIFICATION	VALUE
Travelling flange size	FC64 (4 1/2") metric tapped straddled
Fixed flange size	FC100 (6") metric tapped straddled
Stroke to hard stops	+/-31mm
Stroke to limit switches	+/-30.5mm
Clear bore	60 mm
Bellows bore	90 mm
Leadscrew pitch	2mm
Max probe diameter for full stroke	28mm
Max axial load on travelling flange	200 N
Maximum cantilevered moment	20 Nm
Calibrated scale resolution	N/A
Bakeout temperature	250 °C with motor removed
Stepper motor option	23 frame 8 wires 3A / phase
Stepper option - motor wiring	Pre-wired UTO to drawing 23HT18C330
Stepper motor option - switches	Bakeable limit and home switches with lemo socket wired to diagram WD-002
Stepper motor maximum linear speed	10 mm/second
Linear resolution per 1/2 step	0.005 mm
Repeatability - no backlash compensation	0.1 mm (motorised)
Linear backlash mid stroke	0.2 mm



### For more information:

**UHV Design Ltd**  
 Judges House, Lewes Road,  
 Laughton, East Sussex, BN8 6BN, UK  
 T: +44(0)1323 811188  
 E:sales@uhvdesign.com  
 www.uhvdesign.com

### Официальный представитель:

**АО "ВАКУУМ.РУ"**  
 Москва, Зеленоград  
 тел: +7 (495) 139-65-69  
 e-mail: info@vacuum.ru  
 www.vacuum.ru